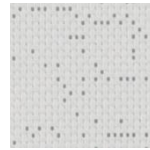


SKYSCREEN ALU

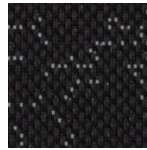
✓ Extremely high solar reflection,
Rs up to 85%

✓ Thin and light fabric

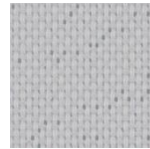
Openness factor: 3%
Composition: 100% PES
Weight: 260 g/m²
Thickness: 0,40 mm
Fire reaction: B1



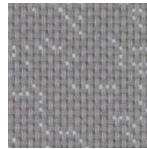
11201 artic snow



10090 black marble



11202 classic silver



11203 silt stone



11205 classic charcoal



11206 rustic taupe



REACH
compliant



SUNCONTROL PROPERTIES

	THERMAL FACTORS					OPTICAL FACTORS								
	Fabric		Fabric+Glazing G tot internal			Fabric								
	Rs	Ts	Glazing C G tot	Glazing D G tot	Glazing E G tot	Tv	Tv dir	Tv diff	Tuv	Glare Control Class	Night Privacy Class	Visual Contact Class	Daylight Utilisation Class	
10090	82	3	0,26	0,14		2,8	2,5	0,3	3	3	2	2	1	
11201	85	2	0,25	0,13		2,3	1,7	0,6	3	3	2	2	1	
11202	82	2	0,26	0,14		1,6	1,1	0,5	2	3	2	2	0	
11203	83	3	0,26	0,14		3,1	2,6	0,5	3	3	2	2	1	
11205	84	2	0,25	0,13		2,4	2,1	0,3	2	3	2	2	1	
11206	84	3	0,25	0,13		2,8	2,4	0,4	2	3	2	2	1	

0 Very little effect

1 Little effect

2 Moderate effect

3 Good effect

4 Very good effect

Ts

Solartransmission

Rs

Solarreflection

Glazing C

Double glazing (4/16/4) space filled with air G=0,59 according to EN 14501:2005

Glazing D

Double glazing (4/16/4) with low emissivity coating in position 2, space filled with argon G=0,32 according to EN 14501:2005

Glazing E

Lighttransmission

Tv

Normal/normal light transmittance (direct)

Tv dir

Normal/diffuse light transmittance

Tv diff

UV transmission

Tuv

Data measured according to EN 410:2011 and EN 14500:2008

Classification of thermal and visual characteristics according to EN 14501:2005

Gtot were determined in IDA-ESBO according to EN ISO 52022-3 (reference-case) EN 410 and ISO 15099

TECHNICAL PROPERTIES		
Openness factor	3%	EN 14500
Composition	100% PES	-
Weight	260 gr/m ²	EN 12127
Thickness	0,40 mm	EN ISO 5084
Fire classifications		
Europe		UNE EN 13501 EN 13773
France		NF P92-503
Italy		UNI 9177
Germany	B1	DIN 4102
UK		BS 5867
USA		NFPA 701
Wheelmark		IMO resolution MSC.307(88)-2010FTP Codeland IMO MSC /Circ.1102
Acoustic Absorption	G-100 / $\alpha_w = 0,2$ / NRC = 0,15	EN 354/EN 11654/ASTM C423
Lightfastness	7/8	EN ISO 105 B02
Breaking resistance	Warp: 120daN / Weft: 100 daN	EN ISO 13934
Elongation to break	Warp: 30% / Weft: 35%	EN ISO 13934
Tearing strength	-	EN ISO 13937
SundaHus	C-	sundahus.se
Byggarubedömingen	undviks	byggvarubedomningen.se

WIDTH: 290 cm

ROLL SIZE: 42 m

MANUFACTURING GUIDANCE:

Length to drop recommended.

Railroading possible but cupping may occur.

Coldcut

CARE INSTRUCTIONS:

Vacuum clean for regular maintenance

Brush off

Do not wash, rub or steam

Do not dry clean

SUITABLE FOR MOIST ATMOSPHERE: No

ENVIRONMENT

Skyscreen Alu 3% have very high reflective properties. This lead to a lot of energy saving, especially in concern of cooling buildings.

The SCS Indoor Advantage™ Gold certificate states a test regarding harmful emissions of fabrics and products in the interior.

Fabrics certified by SCS contribute to a better room air quality. It is comparable to Greenguard certificate