

# SERGE 600 5%

✓ Nice structure

✓ Wide range of Scandinavian colours

Openness factor: 5%

Composition:

42% glasfiber / 58% PVC

Weight: 525 g/m<sup>2</sup>

Thickness: 0,74 mm

Fire reaction: M1 / B1 / C1 /  
NFPA 701 / Cs3d0 / C



002 002



002 007



001 002



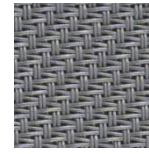
001 061



008 002



007 007



001 001



001 010



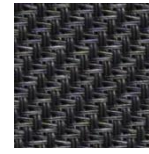
032 032



033 032



033 001



010 010



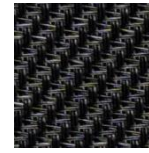
033 033



011 011



010 011



030 030



REACH  
compliant

## SUNCONTROL PROPERTIES

	THERMAL FACTORS					OPTICAL FACTORS							
	Fabric		Fabric+Glazing G tot internal			Fabric							
	Rs	Ts	Glazing C G tot	Glazing D G tot	Glazing E G tot	Tv	Tv dir	Tv diff	Tuv	Glare Control Class	Night Privacy Class	Visual Contact Class	Daylight Utilisation Class
001 001	15	3,5	0,04	0,03		3,6	3,1	0,5	3,5	3	2	2	1
001 002	37	6,7	0,06	0,04		6,6	4,8	1,8	5,5	3	2	2	1
001 010	10	3,6	0,04	0,03		3,6	3	0,6	3,4	3	2	2	1
001 061	33	3,9	0,04	0,03		3,6	2	1	3	3	2	2	1
002 002	66	21	0,15	0,09		21,2	3,8	17,4	4,2	1	2	0	2
002 007	48	11,5	0,09	0,06		10,7	5,4	5,3	6	0	1	3	1
007 007	38	10,1	0,08	0,05		8,4	5,2	3,2	6	1	1	3	1
008 002	58	15,5	0,11	0,07		13,7	4,7	9	5,3	1	2	1	2
010 010	5	3,6	0,04	0,03		3,6	3,2	0,4	3,6	3	2	2	1
010 011	6	6,1	0,06	0,04		6,1	5,6	0,5	6,2	1	1	3	1
011 011	8	3,9	0,04	0,03		3,8	3,4	0,4	3,8	3	2	2	1
030 030	4	5,9	0,05	0,04		5,9			5,9	1	1	3	1
032 032	28	8,3	0,07	0,05		7,4	6,2	1,2	6,9	1	1	3	1
033 001	17	8,3	0,07	0,05		8	7,1	0,9	7,9	1	1	3	1
033 032	25	7,8	0,06	0,04		7,3	6,3	1	7	1	1	3	1
033 033	21	7,1	0,06	0,04		6,8	6	0,8	6,6	1	1	3	1

0 Very little effect

2 Moderate effect

3 Good effect

1 Little effect

4 Very good effect

Ts

Solartransmission

Rs

Solarreflection

Glazing C

Double glazing (4/16/4) space filled with air G=0,59 according to EN 14501:2005

Glazing D

Double glazing (4/16/4) with low emissivity coating in position 2, space filled with argon G=0,32 according to EN 14501:2005

Glazing E

Tv

Lighttransmission

Tv dir

Normal/normal light transmittance (direct)

Tv diff

Normal/diffuse light transmittance

Tuv

UV transmittance

Data measured according to EN 410:2011 and EN 14500:2008

Classification of thermal and visual characteristics according to EN 14501:2005

Gtot were determined in IDA-ESBO according to EN ISO 52022-3 (reference-case) EN 410 and ISO 15099

TECHNICAL PROPERTIES		
Openness factor	5%	NBN EN 410
Composition	42% glasfibre / 58% PVC	-
Weight	525 gr/m <sup>2</sup>	EN 12127
Thickness	0,74 mm	ISO 2286-3
Fire classifications		
Europe	Bs3d0	UNE EN 13501 EN 13773
France	M1	NF P92-503
Italy	Classe 1	UNI 9177
Germany	B1	DIN 4102
UK	C	BS 5867
USA	Pass	NFPA 701
Wheelmark		IMO resolution MSC.307(88)-(2010 FTP Code) and IMO MSC/Circ.1102
Lightfastness	Min. >7	EN ISO 105 B04
Breaking resistance	Warp: 260 daN / Weft: 225 daN	ISO 1421
Elongation to break	Warp: 3,1% Weft: 2,75%	ISO 1421
Tearing strength	Warp: 8,5 daN / Weft: 7,5 daN	ISO 4674 method 2
SundaHus	C-	sundahus.se
Byggvarubedomningen	undviks	byggvarubedomningen.se

WIDTH: 190 / 250 / 320 cm in most colours

011 011 190 / 250 cm

030 030 270 cm

032 032, 033 001, 033 032, 033 033 320 cm

ROLL SIZE: 30 up to 50 m

**MANUFACTURING GUIDANCE:**

Railroading possible

By heat, high frequency or ultrasonic welding

**CARE INSTRUCTIONS:**

Brush off, compressed air

Wash with lukewarm water, a mild hand soap can be added in the water

SUITABLE FOR MOIST ATMOSPHERE: Yes

