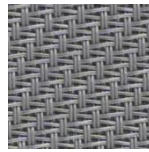


# SERGE 10%

✓ Good visual contact with the outside

✓ Nice structure



001 001



001 010



010 010

Openness factor: 10%

Composition:

42% glassfibre / 58% PVC

Weight: 490 g/m<sup>2</sup>

Thickness: 0,83 mm

Fire reaction: M1 / B1 / C1 /  
NFPA 701 / C

**REACH**  
compliant

## SUNCONTROL PROPERTIES

|         | THERMAL FACTORS |    |                               |                    |                    | OPTICAL FACTORS |        |         |     |                           |                           |                            |                                  |
|---------|-----------------|----|-------------------------------|--------------------|--------------------|-----------------|--------|---------|-----|---------------------------|---------------------------|----------------------------|----------------------------------|
|         | Fabric          |    | Fabric+Glazing G tot internal |                    |                    | Fabric          |        |         |     |                           |                           |                            |                                  |
|         | Rs              | Ts | Glazing C<br>G tot            | Glazing D<br>G tot | Glazing E<br>G tot | Tv              | Tv dir | Tv diff | Tuv | Glare<br>Control<br>Class | Night<br>Privacy<br>Class | Visual<br>Contact<br>Class | Daylight<br>Utilisation<br>Class |
| 001 001 | 13              | 5  | 0,08                          | 0,05               |                    | 5               |        |         | 4,8 |                           |                           |                            |                                  |
| 001 010 | 11              | 6  | 0,08                          | 0,05               |                    | 6               |        |         | 5,7 |                           |                           |                            |                                  |
| 010 010 | 4               | 6  | 0,07                          | 0,05               |                    | 6               |        |         | 6,1 |                           |                           |                            |                                  |

0 Very little effect

1 Little effect

2 Moderate effect

3 Good effect

4 Very good effect

**Ts**

Solartransmission

**Rs**

Solarreflection

**Glazing C**

Double glazing (4/16/4) space filled with air G=0,59 according to EN 14501:2005

**Glazing D**

Double glazing (4/16/4) with low emissivity coating in position 2, space filled with argon G=0,32 according to EN 14501:2005

**Glazing E**

Lighttransmission

**Tv**

Normal/normal light transmittance (direct)

**Tv dir**

Normal/diffuse light transmittance

**Tv diff**

UV transmission

**Tuv**

Data measured according to EN 410:2011 and EN 14500:2008

Classification of thermal and visual characteristics according to EN 14501:2005

Gtot were determined in IDA-ESBO according to EN ISO 52022-3 (reference-case) EN 410 and ISO 15099

| TECHNICAL PROPERTIES |                               |  |
|----------------------|-------------------------------|--|
| Openness factor      | 10%                           | NBN EN 410   |
| Composition          | 42% glassfibre / 58% PVC      | -  |
| Weight               | 490 gr/m <sup>2</sup>         | EN 12127   |
| Thickness            | 0,83 mm                       | ISO 2286-3   |
| Fire classifications |                               |  |
| Europe               |                               | UNE EN 13501<br>EN 13773   |
| France               | M1                            | NF P92-503   |
| Italy                | Classe 1                      | UNI 9177   |
| Germany              | B1                            | DIN 4102   |
| UK                   | C                             | BS 5867  |
| USA                  | Pass                          | NFPA 701   |
| Wheelmark            |                               | IMO<br>resolution MSC.307(88)-(2010 FTP Codeland<br>IMO MSC /Circ.1102 |
| Lightfastness        | >7                            | EN ISO 105 B04   |
| Breaking resistance  | Warp: 312 daN / Weft: 200 daN | EN ISO 13934   |
| Elongation to break  | Warp: 4,7% Weft: 3,8%         | EN ISO 13934   |
| Tearing strength     | Warp: 5,2 daN Weft: 4,9 daN   | EN ISO 13937   |
| SundaHus             | C-                            | sundahus.se  |
| Byggvarubedömingen   | undviks                       | byggvarubedomningen.se   |

WIDTH: 270 cm

ROLL SIZE: 50 m

**MANUFACTURING GUIDANCE:**

Railroading possible

By heat, high frequency or ultrasonic welding

**CARE INSTRUCTIONS:**

Brush off, compressed air

Wash with lukewarm water, a mild hand soap can be added in the water

SUITABLE FOR MOIST ATMOSPHERE: Yes

