

CLEAR ALU

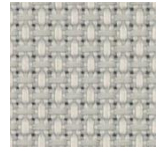
✓ Nice textile structure

✓ Good glare control

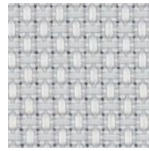
Openness factor: 2%
Composition: 100% FR PES
Weight: 240 g/m²
Thickness: 0,50 mm
Fire reaction: B1



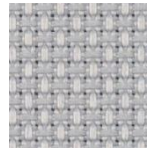
19706 black



19702 beige



19701 light grey



19703 grey



19704 steel



19705 anthracite



REACH
compliant



SUNCONTROL PROPERTIES

	THERMAL FACTORS					OPTICAL FACTORS								
	Fabric		Fabric+Glazing G tot internal			Fabric								
	Rs	Ts	Glazing C G tot	Glazing D G tot	Glazing E G tot	Tv	Tv dir	Tv diff	Tuv	Glare Control Class	Night Privacy Class	Visual Contact Class	Daylight Utilisation Class	
19701	68	4	0,32	0,18		4,6	1	3,6	2	3	2	2	1	
19702	65	3	0,34	0,19		3	0,8	2,2	2	3	2	2	1	
19703	65	4	0,34	0,18		3,1	0,6	2,4	1	3	2	2	1	
19704	65	3	0,34	0,19		1,9	0,7	1,2	1	3	2	2	1	
19705	64	2	0,34	0,19		1,3	0,7	0,6	1	3	2	2	1	
19706	65	3	0,33	0,18		1,1	0,9	0,2	1	3	2	2	1	

0 Very little effect

1 Little effect

2 Moderate effect

3 Good effect

4 Very good effect

Ts

Solartransmission

Rs

Solarreflection

Glazing C

Double glazing (4/16/4) space filled with air G=0,59 according to EN 14501:2005

Glazing D

Double glazing (4/16/4) with low emissivity coating in position 2, space filled with argon G=0,32 according to EN 14501:2005

Glazing E

Lighttransmission

Tv

Normal/normal light transmittance (direct)

Tv dir

Normal/diffuse light transmittance

Tv diff

UV transmission

Tuv

Data measured according to EN 410:2011 and EN 14500:2008

Classification of thermal and visual characteristics according to EN 14501:2005

Gtot were determined in IDA-ESBO according to EN ISO 52022-3 (reference-case) EN 410 and ISO 15099

TECHNICAL PROPERTIES		
Openness factor	2%	EN 14500
Composition	100% FR PES	-
Weight	240 gr/m ²	EN 12127
Thickness	0,50 mm	-
Fire classifications		
Europe		UNE EN 13501 EN 13773
France		NF P92-503
Italy		UNI 9177
Germany	B1	DIN 4102
UK		BS 5867
USA		NFPA 701
Wheelmark		IMO resolution MSC.307(88)-(2010 FTP Code of Practice for the Construction of Codeland IMO MSC/Circ.1102
Acoustic Absorption	G-100 / $\alpha_w = 0,30$ / NRC = 0,25	EN 354/EN 11654/ASTM C423
Lightfastness	>5	EN ISO 105 B02
Breaking resistance	-	EN ISO 13934
Elongation to break	-	EN ISO 13934
Tearing strength	-	EN ISO 13937
SundaHus	C+	sundahus.se
Byggarubedömingen	-	byggvarubedomningen.se

WIDTH: 285 cm

ROLL SIZE: 30 m

MANUFACTURING GUIDANCE:

Fabric used length to drop

Ultrasonic

CARE INSTRUCTIONS:

Vacuum clean for regular maintenance

Brush off

Do not wash, rub or steam

Do not dry clean

SUITABLE FOR MOIST ATMOSPHERE: No

